



Brunswick County Master Gardener Volunteer Association

Upcoming Events...

We host a plant clinic **every Wednesday** at the **Southport Farmers Market from 9-12**. A great chance to meet people and assist them with their problems. Also, it's a beautiful place under a huge oak tree!

- Sept. 13th** Firewise Demo at St. James
- Sept. 17th** Seminar at Leland Library 2-4
- Sept. 18th** Seminar at Southport Library 2-3:30
- Sept. 19th** Sem. at Hickman Crossroad Library 3-5
- Sept. 20th** Wal-Mart, 10- 12 Seminar in Garden Shop and Pesticide container collection from 10- 2
- Sept. 22nd** Brunswick Electric Cooperative Bldg., 12:00 until 1:30
- Sept. 25th** Regular Meeting at 9:00 am
- Sept 29th** Stuff goody bags for Convention here in the Training Center, 8:30 until all bags are stuffed!!!
- Oct. 4th and 5th**, Preparing for the Conference, including setting up and moving all the stuff to Sea Trail. We need **HELP!!!!**
- Oct 5-8 2008 MG Conference** in Brunswick County at Sea Trails Resort
- Oct 16, 17 & 18th** Plant Sale
- Dec 10th** Christmas Party

Upcoming Speakers

- Sept. 25th** Ronda Sherman - Vermicomposting (worms☺)
- Oct 23rd** Toby Bost
- Nov. 20th** updates by horticulture staff
- Jan. 22nd** Dr Bruce Williams
- Feb. 26th** Lisa Wimpfheimer Tryon Palace
- March 26th** Jim LeTendre Tomato Growing
- April 23rd** Kent Kolbe NC DOT Landscape
- May 28th** Anne Pendred Photography
- June 25th** Graduation/Social
- July 23rd** Keith Baldwin NC A&T Soils and Plant Growth

2008 Conference Report

It's time to come! The Conference is almost here and we need you!

Link to the 2008 Conference Web Site

<http://www.ncmastergardeners.org/>

Want to Help? Want to come? Want more Information? Call Shirley. Her phone number 754-4148, e-mail is shirley312@webtv.net

Help needed for Pesticide Disposal Site

Saturday, September 20, 2008

9:00 am - 2:00 pm

Wal-Mart Parking Lot

1675 N Howe Street Southport, NC

Call David Barkley to volunteer

Charlie says there have been lots of openings on the Hot Line. Hey, Folks; The Hot Line is important. Time to put in some hours. You are guaranteed to learn more than those who call!



The kiss of the sun for pardon
 The song of the birds for mirth
 One is nearer to God's heart in a garden
 Than anywhere else on earth

Will we see you at the September Meeting on the 25th at 9:00 am ?

From the Presidents Desk ...

Shirley is busy with last minute planning and has asked me to ask you to really consider either helping out or attending the upcoming North Carolina State MG Conference, or both! Lots of hard work has gone into making this a great conference and you will never have one any closer. The dates again are Oct 5-8 at the Sea Trails Resort at Sunset Beach. Just call the extension office if you need a registration packet.

Charlie says:

Betty needs help on the front desk on Sept. 17th, 18th, and 19th. All the secretaries will be out of town at a conference and the Extension Office needs someone to answer the phone. This counts as Hot Line time since you will be supporting the Extension Service. We need to cover the front desk

from 8:30 until 5:00. Please let me know if you can help. It appears that we may be able to conduct "The Life on the Farm" series again sometime after the Conference and around the Fall Plant Sale. Please help out on any of the opportunities listed on page one and we still need help in certain areas of the Conference. Hope everyone will pitch in to make the conference and everything else listed an outstanding success. Again, thanks for all your help in making the Association so successful.

Work Days

Tuesday, Sept 9th is a scheduled work day in the garden. Fred Mina could use your help. If you signed up to help in the garden, please give Fred a hand.

Member News

Maureen More, a member of the 2008 class, is having medical problems. Drop her a line or a card and let her know we are thinking about her. Her address is 2698 Morningdale Dr., Southport NC 28461-8134.

Linda Lemieux is now selling raffle tickets for two raffle items at the conference - \$1.00 for a reel lawnmower and \$5.00 for an in-ground pond (this is given by Mulch & More).

Master Gardeners Board Elected Officers:

President
Shirley Waggoner-Eisenman
shirley312@webtv.net
910-754-4148
Vice president
Grace Wrigley
gwrigley@atmc.net
910-846-3341
Treasurer
Al Smith
Asmith126@ec.rr.com
910-457-6674

Volunteer Chairs:

Recording Secretary
Patty Burns
burnsdp@atmc.net
910-846-3317
Corresponding Secretary
Peggy Meinzer
pmeinzer@lockwoodfolly.net
910-842-4928
Library
Grace Wrigley
gwrigley@atmc.net
910-846-3341
MG Coordinator – Coop Extension
Charlie_spencer@ncsu.edu
910-383-6432
NCMGVA Liaison
Shirley Waggoner-Eisenman
shirley312@webtv.net
910-754-4148
Newsletter Editor
Joe Loughlin
jloughlin@ec.rr.com
910-269-4038
Restitution & Greenhouse
Ash Tyler
at Tyler@ec.rr.com
910-278-6101
Gardens
Fred Mina
fmina@theminas.net
910-278-6205
Maggie Hoon
fredmaggie@earthlink.net
910-253-0195
Banquets/Parties
Becky Dus
rcd@nfcexperts.com
910-253-8937
Membership
Dominique Loewenstein
domilo@2khiway.net
910-579-0161
History
Barbara McCoy
mccoy@atmc.net
910-575-7679

Webmaster
Lisa Miner

webmaster@bcmastergardener.org



Joe's Kitchen

My Succotash Recipe

There are a million recipes for succotash. Many I really like include butter beans and this one doesn't! Okra is a fun crop to raise if you have never tried it. Give it plenty of sun and lots of space to grow upward. It's a little like zucchini in that you need to harvest it regularly. Otherwise the pods become tough and bitter. Some of you may be turned off by the slippery nature of this green vegetable. Get over it; it tastes great and actually is very useful as a thickening agent in some recipes.



- 4 c. fresh cut okra
- 1 can diced tomatoes
- 2 slices bacon diced
- 1 chopped onion
- 1 chopped red bell pepper
- 1 celery rib, chopped
- 1 Tbs flour
- 2 can whole kernel white corn
- salt & pepper to taste

Place cut okra and tomatoes in sauce pan and cook on slow heat. Fry the bacon, add onion, bell pepper, and celery. Sprinkle with flour and fry on low heat until vegetables are limp. Add corn and tomatoes/okra mix and continue cooking on low heat for about 30-45 minutes. Stir frequently to prevent sticking to skillet. Serve with white rice and your favorite southern meat dish. It's always better the second and third day!

Meet a Master Gardener

Patty Burns, secretary of the BCMGVA

Patty was born in Cleveland Ohio. She lived and worked in central Ohio until 98 when she and her husband moved to Brunswick County. During her childhood, Patty fondly recalls fishing and water skiing

on Lake Erie while vacationing with her Aunt and Uncle. After graduating from Chamberlin High in Twinsburg, Ohio in '66, Patty went on to Franklin University in Columbus. She received a dual degree in Human Resources and Business Management. She then worked as a recruiter and compensation analyst in HR for Stouffer Foods, Wendy's International and Borden Foods. Locally she has worked in HR for PPD in Wilmington.

Patty's family includes 4 grown children and 5 grandsons. Her children live in Delaware, OH, Indianapolis, IN and Port Aransas, TX. The grandsons love to visit Patty in NC, but Patty is thankful that they don't all come at the same time.

Among Patty's favorite activities are fishing, walking the beach, snow skiing and traveling. Patty feels gardening is her passion and a stress reliever from every day life. She is planning a trip to Patti, Sicily, the birth place of her grandparents. Besides being the secretary of the BCMGA, Patty is also involved in her community's fishing club, women's club, gourmet club and the garden beautification group.

Patty has been a MG for 10 years, 9 years in NC and one year in OH. She cherishes the friendships she has made and feels the association continues to provide top notch community service to Brunswick County. She would like to see all association members take a more active part in the many volunteer opportunities.

Horticultural Judging Team

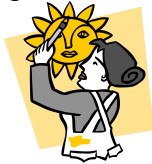
David Barkley's Brunswick County 4-H horticultural judging team is representing NC at the national junior horticultural meeting in October. David is trying to raise money to get the team to the nationals and requested \$1000 from the BCMGVA. We voted last meeting to support the kids. Congrats to them and to David.

"Autumn is a second spring
when every leaf is a flower.

~Albert Camus

Wanted – Talented Members

We are looking for items for our Silent Auction or to be used for door prizes to be awarded to our fellow master gardeners who will be attending the conference. If you have a craft or hobby or other artistic or creative pastime, and would like to donate something to help support the conference, let us know. If you would like to donate something for the Silent Auction, contact Shirley Waggoner-Eisenman (754-4148), or for a door prize, talk to Peggy Halfpenny (253-9624). Thanks!



David Barkley

Extension Horticulture Agent
Brunswick County Cooperative Extension Service

This is a keeper to put on your refrigerator door for tips on how to deal with things... After The Storm!!!!

CLEANUP IS THE FIRST PRIORITY after any major storm. Here are some suggestions to help you with this task. Remember, most roots extend well beyond the outer branches and heavy equipment can damage roots and compact soil even after the storm. Plants that are leaning should be reset and staked. Select replacements as close to size as feasible and don't be tempted to severely prune remaining plants.

- Wait until late winter for hard pruning to help re-establish uniform size.
- Trim partially damaged shrubs and trees as lightly as possible to reshape.
- Leave woody plants that are doubtful

as to survival in place and wait.

Check periodically by scraping bark lightly to reveal green (living) tissue.

- Some uprooted plants can be reset if the root ball is fairly intact. **DO NOT GET IN A HOLE WHERE A TREE ROOT BALL HAS COME OUT OF THE GROUND.** If the tree suddenly rights itself you could get crushed. Caution children to stay out of dangerous situations.
- Don't fertilize newly set plants. Wait until late winter or very early spring just before new growth.

HELPFUL WEBSITE FOR INFORMATION ON DISASTERS

Research-based disaster information may be found by accessing the Disaster Response Information from the North Carolina Cooperative Extension Service website: <http://www.ces.ncsu.edu/disaster/>

This site provides educational materials to help individuals, prepare for hurricanes and to cope with the storm aftermath.

Topics include:

- Reconditioning Flood Damaged Farm Equipment
- Storm-Related Pest Problems in and Around Home
- Mosquitoes
- Yellow Jackets and Other Wasps
- Spiders
- Flies (Residential)
- Flies (Farms & Stables)
- Rodents
- Snakes after a Storm or Flood
- Termites
- Carpenter Ants
- Pests Associated with Decaying Organic Matter
- Damaged Pesticide Containers

- After the Flood: Pesticide Storage Facilities On the Farm
- Emergency Contact List for Flooded Pesticide Storage Facilities
- Future Potential Problems

also from the University of Florida

<http://treesandhurricanes.ifas.ufl.edu/>

Assessing Landscape Tree Loss

The following factors help determine the value of damaged trees and other landscape materials:

- The decrease in the fair market value of the property as a result of the casualty.
- The adjusted basis in the property.
- The amount of insurance or other compensation received.



Home owners who sustain significant damage to landscape trees may wish to contact the IRS to determine what methods are currently being used to evaluate tree value. Record-keeping is important in substantiating any claims for loss recovery. These are some of the things you will need:

1. Homeowners must be prepared to show:
2. The nature of the casualty and when it occurred.
3. That the loss was the direct result of the casualty.
4. That the claimant is the owner of the property.
5. Proven property value before and after the

casualty.

6. The amount of insurance or other compensation received or recoverable.

Tips for Filing Claims for Casualty Losses

- Photographs of the property before and after the damage help show the condition and value of the property prior to the casualty.
- Local newspaper articles complete with dates and the newspaper's name serve as evidence of the casualty and its time and location.
- Appraisals are the most desirable tools for establishing values before and after casualties.
- Keep receipts for repair and replacement for claims.

I hope you will not need this information this fall. If you do have questions concerning plant damage please contact your local extension office or check first the above websites.

Third, promote and encourage your master gardener friends to get their registration in as soon as possible. We want to have a good showing from our county and to show off our talents. You are the best and I am proud of the work you do.

Sincerely and with much thankfulness,
David Barkley

WE NEED HELP IN THE BOTANICAL GARDEN AND FOR OTHER TASKS AS WE PREPARE FOR OUR GUESTS COMING IN OCTOBER. BE A PART OF SOMETHING GREAT and VOLUNTEER TODAY FOR OUR STATE MEETING.

We will have several workdays to focus on making the Brunswick Botanical Gardens look the best they can when we host the State meeting in October. We need about

8-10 volunteers for; **September 17, 18, 24, 25 and 26.**

We need 12 to 20 volunteers for; **October 1 and 2.** Depending on what happens with the storms we may need more help on other days too.

Watch UNC-TV Saturdays, at noon for 'In the Garden' with Bryce Lane!

Garden Tips

- Some areas are having an excellent year for caterpillars, butterflies and moths. If you lose foliage from a deciduous tree this time of the year, it will not hurt the tree. The leaves have already produced plenty of food for the tree and they would fall anyway in another month. The main reason to kill these fall caterpillars would be to keep the droppings off the sidewalk or out of the pool. Any pesticide labeled for caterpillars would work. Be sure to use one labeled for fruits or nuts if you plan to spray something edible. By the way, the ones that make webs this time of the year are commonly called fall webworms. Tent caterpillars will show up in the spring and their nests are normally in the forks of the tree. Fall webworms will make nests on the ends of the limb. Bagworms have individual protective bags instead of webs. Speaking of bagworms, it is too late to control them with a pesticide. The good news is that the eggs will be laid inside the bag and hand-picking the bags will work from now until next June.
- Rising energy costs have some of us considering cost-saving measures, even when it comes to our lawns. Do you have



more lawn than you need? Many urban landscapes are quite small, but there still are plenty of homes with huge expanses of grass. It is not difficult to convert a lawn to a forested area, although you may have to comply with certain zoning requirements. A forested area requires less energy to maintain.

- The high price of gas is still causing the cost of produce to rise at the grocery store. Support local growers by purchasing at farmers markets or, better yet, plan to put in a fall garden, if you have not already. Plant cool-weather plants such as lettuce, broccoli, cabbage, collards, spinach and other greens now, along with root crops such as carrots, radishes, beets, onions and garlic. Turnips for roots need to be planted now. Turnips for greens can be planted until September 20. Consider growing some edible crops in your landscape. Choices for edible landscaping include blueberries, figs and grapes.
- Compost is not only good for your garden but making and using it is good for your community. Any leaves, grass clippings or pruning that go into the pile don't end up being collected by cities. Make a simple compost pile by incorporating a small amount of garden soil and a little fertilizer to a pile of leaves. Next spring you will have a supply of leaf mold to improve the structure of your garden soil. To achieve faster decomposition of the compost pile, turn the pile over every month or so during the growing season. For more detailed information on composting go to <http://www.ces.ncsu.edu/depts/hort/hil/pdf/ag-467.pdf>

2008 Dues Notice

Dues are payable by January 1 each year.

(But we will accept them now!) (Hint! Give us a twenty and forget it for 4 years)

Make checks payable to: Brunswick County Master Gardener Volunteer Association (BCMGVA)
\$5.00 per Individual

Name _____

Address _____

Email _____

Mail checks to: **Allen Smith**

4515 Fieldstone Cir SE
Southport, NC 28461

NAMETAG; you have earned it, now wear it.
We would all like to know your name.

If you have an item for the newsletter, submit it to Joe Loughlin (jloughlin@ec.rr.com)

Brunswick County Master Gardener Volunteer Association
P.O. Box 109
Bolivia, NC 28422
Office: 910-253-2610

www.bcmastergardener.org

www.ces.ncsu.edu/brunswick

www.ncmastergardeners.org



Postage stamp

First Class Mail