



Brunswick County Master Gardener Volunteer Association Newsletter January, 2009

Upcoming Events...

- Jan. 22nd Dr. Bruce Williams on
Landscaping at our regular meeting
Jan. 31 – Feb. 1st Wilmington Garden Show
March 21 & 22 Brunswick Island's Home
and Garden Show

Upcoming Speakers

- Feb. 26th Lisa Wimpfheimer Tryon Palace
March 26th Jim LeTendre Tomato Growing
April 23rd Kent Kolbe NC DOT Landscape
May 28th Anne Pendred Photography
June 25th Graduation/Social
July 23rd Keith Baldwin NC A&T Soils and
Plant Growth

2009 State Conference is Scheduled

The 2009 conference is 10/4 - 7 and will be
in Iredell County at Mooresville, NC They
will have a tour of the Daniel Stowe
Botanical Garden.

The best place to seek God is in
a garden. You can dig for him
there. ~George Bernard Shaw

Tired of planting the same old flowers &
vegetables that are offered at the big box
stores?

Now is the time to find those special plants
you want to grow this year and get them
ordered. Seeds can be an excellent way to
color to your garden and zing to your diet
without breaking the bank. I just ordered
some bright red zinnia seed and a packet
of arugula seed (I fell in love with this tasty
green in Italy). I love to plant big beds of
red zinnias which you can't find anywhere
except in the catalogs. They are so easy to
start and I get
several flats of
them for the
price of a
couple of 4
packs at the



nursery. It is almost time to start planting
some of your spring garden plants, so get
those seeds a coming. Here are a few
links.

<http://www.parkseed.com/>

<http://www.burpee.com/>

[Pinetree Garden Seeds](#)

Will we see you at the January Meeting on the 22nd at 9:00 am ?



Charlie says:

Welcome to the new year. Hope everyone enjoyed the holiday season and are now ready to "Seize the opportunities" of the coming year.!!! Need some help on the Hot Line. Hardly anyone has signed for Jan.

HELP! Lastly, don't forget to pay your dues. It's only 5.00 dollars a year.

Again, thanks for making 2008 a really great year.

From the Presidents Desk...

Hope everyone had a safe and happy holiday, I can tell spring is just around the corner as I have begin to receive seed catalogs. Now is a great time to plan changes in you landscape and garden.

We have a great line up of speaker planned for this year so mark you calendar for our meeting dates. The year begins in January with Dr. Bruce Williams.

I have been told there will be a new class of Master Gardeners starting shortly. With everything that we as Master Gardeners do we can also use more help.

During the year make sure you sign up for the hot line, plant sales, botanical garden and volunteer for seminars.

This year we will become our own web master for our web site. Thanks to Master Gardeners who have volunteered to serve as web master for the web site.

Look forward to seeing you at our meetings. Don't forget to pay your association dues, the period covered is from January 1 -December 31. If dues are not paid by March you will be dropped from he association roster.

Shirley

Master Gardeners Board Elected Officers:

President

Shirley Waggoner-Eisenman

shirley312@webtv.net

910-754-4148

Vice president

Lynn Schwartzfopf

910-253-0722

Treasurer

Gloria Rapp

hankrapp@atmc.net

910-253-4071

Volunteer Chairs:

Recording Secretary

Patty Burns

burnsdp@atmc.net

910-846-3317

Corresponding Secretary

Cathie Rod

csrod@ec.rr.com

910-457-5091

Library

Grace Wrigley

gwrigley@atmc.net

910-846-3341

MG Coordinator – Coop Extension

Charlie_spencer@ncsu.edu

910-383-6432

NCMGVA Liaison

Shirley Waggoner-Eisenman

shirley312@webtv.net

910-754-4148

Newsletter Editor

Joe Loughlin

jloughlin@ec.rr.com

910-269-4038

Restitution & Greenhouse

Ash Tyler

at Tyler@ec.rr.com

910-278-6101

Gardens

Fred Mina

fmina@theminas.net

910-278-6205

Maggie Hoon

fredmaggie@earthlink.net

910-253-0195

Banquets/Parties

Becky Dus

rcd@nfcexperts.com

910-253-8937

Membership

Dominique Loewenstein

domilo@2khiway.net

910-579-0161

History

Barbara McCoy

mccoy@atmc.net

910-575-7679

Joe's Kitchen

My favorite appetizer from my Italy trip was *Bruschetta with Tomato and Basil*. This is simple and sooo good!

1 Loaf of a good Italian or French bread, a dense country style, sliced about ¾" thick

Several cloves of garlic

4or 5 nice Roma Tomatoes

4 Tbs of fresh chopped basil

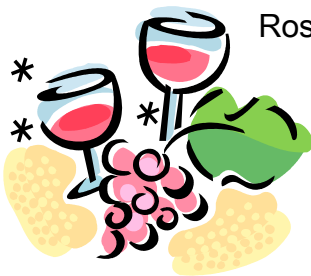
Fresh Extra Virgin Olive Oil

Fresh Ground Pepper and Salt



Brush olive oil onto both sides of your bread slices and broil them on a cookie sheet on both side till light brown. Rub both sides of the bread slices with a cut garlic clove. Chop tomatoes and basil and combine in a small bowl. Spread mixture over toasted bread and season with salt and pepper. Now open a bottle of Brunello di Montalcino or

* Rosso di Montepulciano, add a few olives and
* some pecorino cheese and imagine your having a picnic in the Tuscan countryside.



Meet a Master Gardener

(I Need your Bio) Contact Cathie Rod for a form

David Barkley

Extension Horticulture Agent

Brunswick County Cooperative Extension Service

Thanks to those who participated in the Life on the Farm. I again thank the MG's for their financial support to the 4H Horticulture Judging Team. Ash Tyler has won a blue ribbon for his begonia at the Cape Fear Fair. On 12/1, a major construction project will be started in the botanical gardens with

the Encore azaleas demonstration. Erv Evans has retired and a transition team is being developed to determine who will assume his responsibilities until a replacement is hired. Lucy Bradley, Consumer Hort Specialist, is in

charge of the transition team and has asked for one agent from all the districts to serve on it. Charlotte Glen from Pender County will represent our district. Dave also stated that Lucy Bradley put on a training workshop for those interested in learning about the new website. Members of our technology committee attended and you will be hearing more about the site soon..

Garden Tips for the New Year!

I hope that each and every one of you had your Holiday Wishes come true. If Santa didn't quite bring you exactly what you asked for, then you may be able to pick up some bargains priced just right for you to take home. Don't forget to check on some of the gardening equipment needs for the coming spring season. You may find this to

be just the right time of the year to pick up the items that will make your spring gardening chores easier to handle this year.

Spring is just around the corner and many "Coastal Gardeners" in our area will be putting out early spring gardens now and will be preparing other garden spots which require a later planting date. So button up for cold weather and look for those days that you can get outside comfortably to work on some of the plans you have for the coming spring. Even if the weather doesn't cooperate, there are still chores that can be performed inside.

Don't forget your indoor plants that have been brought in to rest. Keep them watered (moist to touch) and provide them with enough light to continue their growth. Avoid cold or hot air drafts. I like to group my plants together so that each plants respiration and transpiration will provide additional humidity for the other surrounding plants.

Watch UNC-TV Saturdays, at noon for 'In the Garden' with Bryce Lane!

Plant carrots in January and you'll never have to eat carrots. ~Author Unknown

JANUARY Garden Chores



- ◆ Enroll in classes! Read and study up on ideas you would like to achieve for this year
- ◆ Continue to plant spring flowering bulbs.
- ◆ Think water garden and have it ready for spring. There are numerous sources of information and construction materials for these type projects. Garden centers and mass merchandising garden stores are handling pool liners, pumps, and aquatic plants.
- ◆ Continue planting container grown ornamentals. Be sure to loosen the roots and the media before backfilling. For slightly pot bound roots: Cut on 3-4 sides shake the roots and media to a loose condition and then plant.
- ◆ Plant Fruit Trees in the Landscape. The 2009 seed and nursery catalogs have already arrived and this will trigger "spring fever" for many gardeners. We have a handout on "Fruits for the Southeast" that would provide the best alternatives to those

beautiful apples and pears on the cover of the gardening magazines. Yes, you can grow apples here but I would not encourage anyone to go into wholesale commercial apple production just yet.

- ◆ Add lime according to soil test recommendations. For best results in home landscapes, till the lime into the root zone area for whatever plant you intend to grow. Surface applied lime reacts very slowly, and not as completely as lime mixed into the soil. The sooner the lime is applied in the winter, the more ready you'll be for spring planting.
- ◆ Ornamental Grass tops should be cut back now. On old established clumps, prune back to 2' or so and with the younger plantings, simply tip them back to remove the brown foliage.
- ◆ If you have rose bushes, rake the fallen leaves and discard them as many disease organisms persist through the winter. Covering them up with new mulch will not solve your disease problems.
- ◆ Pansies are by far the most popular winter landscape annual. Deadhead



periodically to ensure more blooms. During active growth in the spring fertilize them about once a month. A dilute liquid feed of 5:10:10 or 5:10:30 will keep them going and growing.

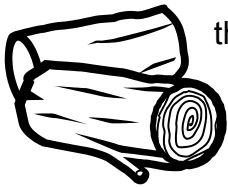
- ◆ Be prepared just on the chance there may actually be some more winter weather ahead of us. Don't let unseasonably mild temperatures dictate what you do in the landscape.
- ◆ Poinsettia's keeping quality depends on several factors. Many home gardeners have no problem keeping a poinsettia attractive through the winter, but bringing it into "flower" in subsequent years is a challenge for the best of gardeners. They are still considered actively growing and will need water, sunlight, and fertilizing through February.

Weather means more when you have a garden. There's nothing like listening to a shower and thinking how it is soaking in around your green beans. ~Marcelene Cox

Lowering Energy Cost: Consider Firewood for Home Heating

Many Residents in the Cape Fear Region are looking for ways to lower energy costs and may supplement their energy needs for heating by using firewood. January and February are typically our coldest months for the winter. I am always looking for some good information to pass along to clients when I came across this information on firewood from John Church from the Rockford

Extension Center affiliated with the University of Illinois.



Now that the firewood season is here there are many questions about purchasing, burning, storing, and selecting the wood, especially for novice wood buyers. Firewood can be purchased from dealers and retail stores, or many people cut their own firewood. The cost of firewood can vary a great deal. The best practice is to call several suppliers to compare the cost, based on factors such as quantity, quality for desired use, delivery, and their willingness to stack the wood.

Quantity is the first starting point for "comparison shopping." Be sure to find out if the price is based on a cord, face cord, pickup truck load or some other amount. A cord is a stack approximately 4 ft. high, 4 ft. deep, and 8 ft. long with pieces that are 4 inches or larger in diameter. A face cord is a less precise standard measurement, but usually means a stack equal in height and

length, but less in depth compared to a standard cord.

Pickup truck loads can vary the most. Be sure to ask if it is a full-size or small truck and if it is stacked to the top of the cab or just to the top of the box. A standard, full size pickup truck, stacked to the top of the cab, can contain approximately a cord of wood. To the top of the box, such a truck can hold approximately 2/3 of a cord. A small-size pickup stacked to the top of the cab can hold about 1/2 of a cord and to the top of the box it can hold about 1/3 of a cord.

Quality is also a factor. Different types of wood have different characteristics, such as amount of heat, length of burn time, aroma, smoking, sparking, and other differences. Fireplace users often prefer the aroma and desire less sparking, but are not as concerned about the heating value. Wood stove or furnace owners look for high heat energy. Quality considerations also include the age or dryness of the wood and the internal condition of the firewood pieces, such as solid or decayed.

When shopping for firewood, also ask if the price includes stacking as well as delivery. Size of the firewood may also be a factor. Ideally, the pieces should be pre-cut to a few inches shorter than the firebox in which it will be burned.

2008 Dues Notice

Dues are payable by January 1 each year.

(But we will accept them now!) (Hint! Give us a twenty and forget it for 4 years)

Make checks payable to: Brunswick County Master Gardener Volunteer Association (BCMGVA)
\$5.00 per Individual

Name _____

Address _____

Email _____

Mail checks to: **Gloria Rapp**

4149 Sharewater Way SE
Southport, NC 28461

NAMETAG; you have earned it, now wear it.
We would all like to know your name.

If you have an item for the newsletter, submit it to Joe Loughlin (jloughlin@ec.rr.com)

Brunswick County Master Gardener Volunteer Association
P.O. Box 109
Bolivia, NC 28422
Office: 910-253-2610

www.bcmastergardener.org

<http://brunswick.ces.ncsu.edu/>

www.ncmastergardeners.org

Postage stamp

First Class Mail